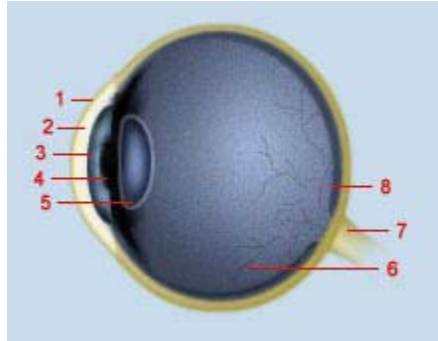


ANATOMY & FUNCTION OF THE EYE

Fact Sheet

Eye Function

The eye works much like a camera. Like the eye, a camera produces images by focusing light to create a visual impression on film. In vision, light enters the eye through the cornea, which with the lens focuses the image onto the retina where it is then transferred to the brain via the optic nerve. The eye's ability to focus on objects up-close is accomplished by tensing or relaxing the muscles of the lens in the eye. However, with age, the eye loses its ability to focus, making near vision – the ability to see things up-close – difficult without the aid of reading glasses.



1. Conjunctiva

This is the transparent covering of the eye that lies between the eyelid and the front of the eye.

2. Cornea

This is the window of the eye where the majority of focus takes place.

3. Iris

Actually classified as a muscle, the iris is the colored portion of the eye that adjusts the amount of light allowed to enter into the eye.

4. Pupil

This is the black spot in the center of the eye where light enters. Pupil size changes when the iris tenses or relaxes depending on the amount of light present.

5. Lens

Located behind the pupil, the lens is the secondary mechanism of focus after the cornea, adjusting the amount focus the light image requires before it reaches the retina.

6. Vitreous

This is the gel that fills the eye and allows it to maintain its shape. It also serves as a clear pathway for light when it travels from the lens to the retina.

7. Optic Nerve

This is the pathway between the eye and the brain along which the signals produced by the retina travel to the brain.

8. Retina

The retina is the nerve center of the eye where light is converted into an electrical signal that travels along the optic nerve to the brain.

Mkt-06-119

www.myclarvision.com

Press Contact: Liana Miller (949) 595-4320 / liana@goolsbygroup.com